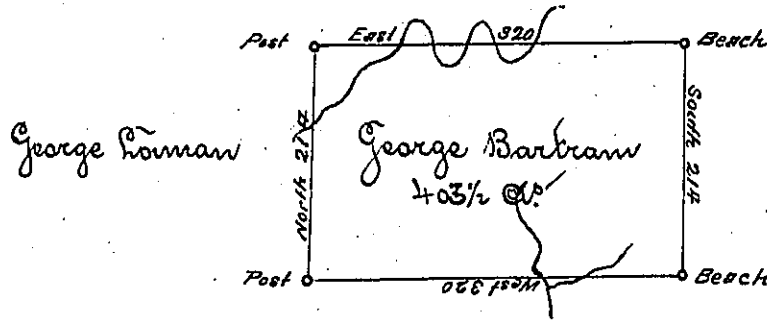


State Line



Situate on the waters of French Creek in Allegheny County Survey'd on the  
~~water~~ of 1<sup>st</sup> day of Sept<sup>r</sup> 1795 to George Bartram on his Warrant dated 30<sup>th</sup> May  
 1792 Containing Four hundred three acres and half & allowe

Paul Brodhead Esq<sup>r</sup> }  
 Surveyor General

Tho<sup>s</sup> Rees A. D.

IN TESTIMONY that the above is a copy of the original remaining on file in the  
 Department of Internal Affairs of Pennsylvania, made con-  
 formably to an Act of Assembly approved the 16th day of  
 February, 1833, I have hereunto set my Hand and caused  
 the Seal of said Department to be affixed at Harrisburg, this  
 Twentieth day of December 1894.

*Thos Stewart*  
 Secretary of Internal Affairs.